



Solutions for your Environment™

Application Guide for Profile® High Performance (HP) Hydraulic Mulch

Application / Loading Procedures

- A.** Strictly comply with equipment Manufacturer's installation instructions and recommendations. Use approved hydro-spraying machines with fan-type nozzle (50-degree tip) whenever possible to achieve best soil coverage. Apply from opposing directions to assure 100% soil surface coverage. Slope interruption devices or water diversion techniques are recommended according to the slope interruption limits table on the back.
 - B.** To ensure proper application rates, measure and stake area. Apply fertilizer with specified prescriptive solutions along with seed and HM at a rate of **50 pounds per 100 gallons of water** over properly prepared surfaces. See loading chart on the back and confirm loading rates with equipment manufacturer. Do not apply on saturated soils or substrates. Do not apply if precipitation is anticipated within 24-48 hours.
 - C.** Fill 1/3 of the mechanically agitated hydroseeder with water. Turn pump on for 15 seconds and purge and pre-wet lines. Turn pump off.
 - D.** Turn agitator on, open recirculation valve and load low density materials first (i.e. seed).
 - E.** Continue slowly filling tank with water while loading mulch into tank.
 - F.** Consult loading chart on the back to determine the number of bags to be added for desired area and application rate.
 - G.** Mulch should be completely loaded before water level reaches 75% of the top of tank.
 - H.** Top off with water and mix until all fiber is fully broken apart and hydrated (minimum of 10 minutes—increase mixing time when applying in cold conditions). This is very important to fully activate the bonding additives and to obtain proper viscosity.
 - I.** Add fertilizer and any other remaining amendments.
 - J.** Shut off recirculation valve to minimize potential for air entrainment within the slurry.
 - K.** Slow down agitator and start applying with a 50-degree fan tip nozzle.
 - L.** Spray in opposing directions for maximum soil coverage.
 - M.** Upon completion of application, return to water source to repeat mixing and application sequence or to flush equipment. Thoroughly purge pump and all lines of residual materials from previous load. Monitor residual material in tank after purging; excess material may reduce number of bales to be mixed in subsequent loads.
- Always refer to equipment manufacturer's specifications for working capacity of the machine.
 - Best results and more rapid curing are achieved at temperatures exceeding 60°F (15°C). Curing times may be accelerated in high temperature, low humidity and windy conditions with product applied on dry soils.
 - Always flush residual slurry from hydraulic seeding/mulching equipment immediately following each application, at the end of each work period or when equipment will be left unattended; compounds containing Urea, Nitrogen, Phosphorus, Potassium and macro/micronutrients may form and can be hazardous to human health and equipment.

Loading Chart for Profile® High Performance (HP) Hydraulic Mulch

Tank Size gal	# of 50-lb bales	Mulch Fiber lb	1,500 lb/ac		2,000 lb/ac		2,500 lb/ac	
			Sq ft	Acres	Sq ft	Acres	Sq ft	Acres
100	1	50	1,452	0.03	1,089	0.03	871	0.02
250	2.5	125	3,630	0.08	2,723	0.06	2,178	0.05
300	3	150	4,356	0.10	3,267	0.08	2,614	0.06
500	5	250	7,260	0.17	5,445	0.13	4,356	0.10
700	7	350	10,164	0.23	7,623	0.18	6,098	0.14
750	7.5	375	10,890	0.25	8,168	0.19	6,534	0.15
900	9	450	13,068	0.30	9,801	0.23	7,841	0.18
1,000	10	500	14,520	0.33	10,890	0.25	8,712	0.20
1,500	15	750	21,780	0.50	16,335	0.38	13,068	0.30
2,000	20	1,000	29,040	0.67	21,780	0.50	17,424	0.40
2,500	25	1,250	36,300	0.83	27,225	0.63	21,780	0.50
3,000	30	1,500	43,560	1.00	32,670	0.75	26,136	0.60
3,500	35	1,750	50,820	1.17	38,115	0.88	30,492	0.70
4,000	40	2,000	58,080	1.33	43,560	1.00	34,848	0.80

Additional Notes:

- For hose applications, 40 lb/100 gal is recommended.
- Rough surfaces (rocky terrain, cat tracks, ripped soils, etc.) may require additional product to achieve adequate soil coverage.
- Be sure to allow for residual material in tank on subsequent applications.

Application Rates		
	Slope Condition	English
Wood with Tack*	≤ 4H to 1V	2,000 lb/ac
	> 4H to 1V and ≤ 3H to 1V	2,500 lb/ac
Wood	≤ 4H to 1V	2,000 lb/ac
	> 4H to 1V and ≤ 3H to 1V	2,500 lb/ac
Blend with Tack	≤ 4H to 1V	2,000 lb/ac
	> 4H to 1V and ≤ 3H to 1V	2,500 lb/ac
Blend	≤ 4H to 1V	2,000 lb/ac
	> 4H to 1V and ≤ 3H to 1V	2,500 lb/ac
Cellulose with Tack**	≤ 4H to 1V	1,500-2,000 lb/ac
Cellulose**	≤ 4H to 1V	1,500-2,000 lb/ac

*Below ECB or TRM 1,500 lb/ac is recommended.

**For maximum performance, 2,000 lb/ac is recommended.

Slope Interruption Limits*

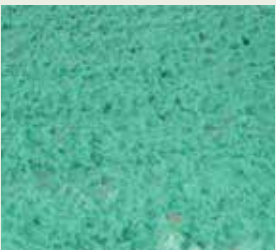
Product Category	Length (ft)
Wood with Tack	30
Wood	20
Blend with Tack	20
Blend	15
Cellulose with Tack**	15
Cellulose**	15

* Listed slope interruption limits are for product applications on a 3H to 1V slope. For application on steeper slopes, slope interruption lengths may need to be decreased.

** Based on 4H to 1V slope

Visual Key for Proper Application

Proper Application



Improper Application



1,500 lb/ac



2,000 lb/ac



Solutions for your Environment™

PROFILE Products LLC

750 W. Lake Cook Road • Suite 440 • Buffalo Grove, IL 60089

Profile is a registered trademark of PROFILE Products LLC.
Solutions for your Environment is a trademark of PROFILE Products LLC.



Find us on facebook.com/profileEVS

Profile® High Performance Mulch

ESP-02 03/21



LOCATIONS & CONTACT INFO

ASP ENTERPRISES

aspent.com
salesasp@aspent.com

BOWMAN CONSTRUCTION SUPPLY

bowmanconstructionsupply.com
salesbcs@bowmanconstructionsupply.com

QUICK SUPPLY CO.

quicksupplyco.com
salesquick@quicksupplyco.com

CASCADE GEOSYNTHETICS

cascadegeos.com
salescascade@cascadegeos.com

St. Louis, MO 636.343.4357
Omaha, NE 402.861.8579

Denver, CO 303.696.8960
Loveland, CO 970.535.0863

Des Moines, IA 515.289.1271

Portland, OR 971.339.1020

Kansas City, MO 816.554.1191
Wichita, KS 316.393.1554

Colorado Springs, CO 719.257.7840

Salt Lake City, UT 435.276.0820

SOLUTIONS WE SUPPLY

GEOSYNTHETICS

Filter Fabrics
Stabilization Fabrics

Geogrids

- Road Grids
- Wall Grids
- Slope Stabilization

Specialty Fabrics

Composite Geomembranes

- GCLs, PVC, HDPE, LLDPE, EPDM, Granular Bentonite

SEDIMENT CONTROL

Inlet Protection

- Grated Inlet, Curb Inlet, Area Inlet Protection

Ditch Checks

- Triangle Silt Dike
- GeoRidge

Perimeter Protection

- High and Low-Porosity Silt Fence, Straw Wattles, Silt Socks
- Safety Fence

Flocculants & Water Treatment

- Polymer-Based & Natural Flocculants

Sediment Basin Skimmers

Dewatering Bags

Trackout Control

- FODS
- Rumble Grates

Turbidity Curtains

EROSION CONTROL

Basic Hydraulically Applied Mulches

- Wood
- Paper
- Blends
- Straw

High-Performance Hydraulically Applied Products

- BFM
- FGM
- Additives & Tackifiers

Temporary Erosion Control Blankets

- Coir & Jute Mat/Nettings
- Short-Term ECBs
- Extended-Term ECBs

Permanent Erosion Control Blankets

- Turf Reinforcement Mats
- HP-TRMs
- Anchor Reinforced Vegetation System

Structural BMPs

- Transition Mats
- Geoweb Cellular Confinement
- Composite Vegetated Armor System
- Flex MSE Vegetated Wall System
- Articulated Concrete Block
- Gabions
- Grout-Filled Geotextile Mats

Vegetation Establishment

- Native Seed & Turf Seed
- Fertilizers
- Organic Soil Additives
- Stratavault Soil Cells

STORMWATER MANAGEMENT

Water Quality

- Inlet Filter Boxes
- Pre-Treatment Chamber
- Nutrient Separating Baffle Boxes
- High-Flow Biofiltration Media
- Hydrodynamic Separators
- Stratavault

Water Quantity

- Modular Underground Storage Systems
- Chamber Detention Systems

Drainage

- HDPE Swale Liner
- Pipe & Fittings
- Drainage Composites
- Strip Drain

Inlet Structures

- PVC
- Drain Basis, In-Line Drains
- Landscape

Permeable Pavers

- Permeable Articulating Concrete Block
- Grass Pavers
- Gravel Pavers
- Concrete Pavers

SPECIALTY

Natural & Synthetic Coir Fiber Logs

Vegetated Reinforced Soil Slopes

Soil Anchors

Root Barrier System

AquaBlok

Muscle Wall

We are full line distributors of construction materials for all project types. Contact us for assistance with a project. From specification and development to installation and completion, we're here to help with all of your site solution needs.

**GEOSYNTHETICS | EROSION CONTROL | STORMWATER MANAGEMENT
SEDIMENT CONTROL | REVEGETATION & SOIL AMENDMENTS**