

georidge.com nilex.com

Distributed by:

Good Stuff for the Earth™

For more information, or to locate a dealer near you,
please email info@georidge.com, or call toll-free:

Canada
1.800.667.4811

USA & International
1.800.537.4241

Nilex GeoRidge®



The original, patented ditch berm



GeoRidge®

Go with the flow

Durable, low cost GeoRidge® berms are designed to provide effective erosion and sediment control. GeoRidge is portable, lightweight, stackable, and proven to be an effective energy dissipater. Isn't it time you replaced those traditional sodden straw bales with GeoRidge?

Rather than totally blocking the flow, GeoRidge reduces flow velocities and provides a smoother, less damaging release of water - eliminating the problem of downstream sediment.

GeoRidge is quick and easy to install, with no machine trenching required. A simple anchoring system secures the panels, usually in minutes.

About Nilex

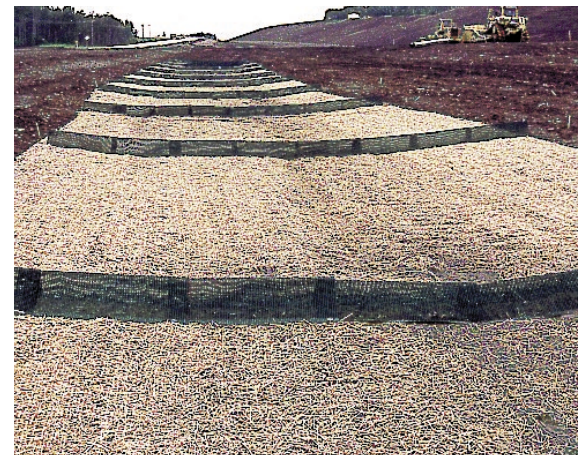
Nilex provides unique solutions in geosynthetics, erosion control and reclamation technology - for over 25 years.



The GeoRidge® System

GeoRidge is a permeable plastic berm designed for erosion and sediment control. The berms are constructed of a UV stabilized HDPE and designed to replace traditional straw bale berms. GeoRidge is manufactured using a fully automated process to ensure the highest quality and consistency.

GeoRidge Anchors are galvanized spikes used to secure the GeoRidge panels on both the upstream and downstream sides.



Installation of GeoRidge panels on roadside. The panels slow the flow of water prior to its arrival in the collection area. For greater effectiveness, we recommend installing GeoRidge with an erosion control blanket.

As water flows through the GeoRidge berm, its velocity and energy are reduced. As a result, silt and sediment are deposited upstream of the berm aiding in sediment control.



New vegetation growing on the downstream side of the GeoRidge. Note the significant sediment the berm has prevented from flowing downstream.



Recommended Options

Erosion Control Blankets are recommended directly under the GeoRidge panels. These blankets prevent undermining of the panels and encourage the earliest possible vegetation growth.

GeoRidge Advantages

- Constructed of a UV stabilized HDPE
- Lightweight - about 1 kg (2.2 lbs.)
- Reusable
- Portable and stackable - 500 GeoRidge can easily fit on a pickup truck
- Quick and easy installation
- No machine trenching required
- Simple anchoring system
- Minimum maintenance
- Collects sediment and debris
- Reduces rather than blocks flow velocities
- Open structure allows revegetation
- Complements the performance of erosion control blankets

GeoRidge Applications

- Roadside ditches
- Streambeds
- Stormwater channels
- Hillside ditches
- Slopes
- Golf courses
- Nurseries
- Developments
- Construction sites
- Irrigation

